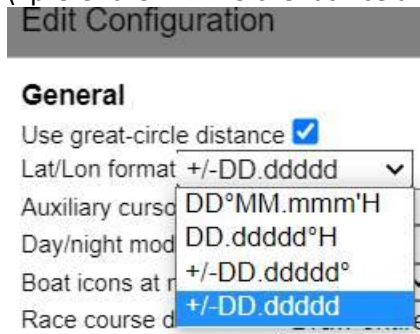
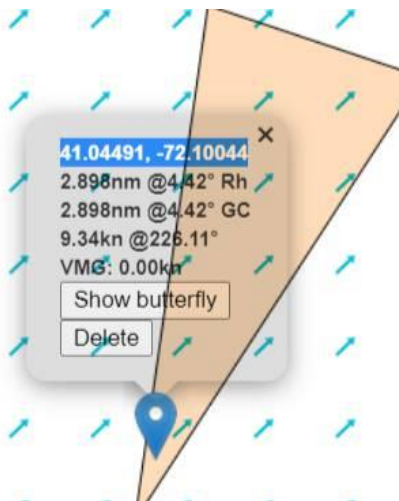


How to add the SOL map coordinates to the KMZ.

1. Determine what map tiles will be used for the race. This is either High res or Intermediate and will result in an accurate mark on the SOL map. Likely Intermediate for ocean races, high res for smaller races.
2. Whichever SOL client you run, set the coordinates to +/- DD.ddddd  
(I prefer the HTML 5 client since the ruler tool is better for distance estimates.)



3. On the map do ALT+Click and copy the coordinates



4. Paste them into the description section of the WP/Mark in the KMZ.



In this way Ops will have a specific SOL map coordinate to use when setting up the race.

5. Copy those individually into the Latitude and Longitude settings to set the mark in GE.



I often will make a few tweaks to get the mark as close as possible to GE and still be correctly positioned on the SOL map.